

770079 Ground Master Monitor

### SCS # 770079

**A. Modbus 3.5 mm Stereo Jack:** Outputs Modbus communication protocol which may be used as an alternative to the Ethernet port.

**B. Ethernet Jack:** Provides network communication between the Ground Master Monitor and [Static Management Program \(SMP\)](#).

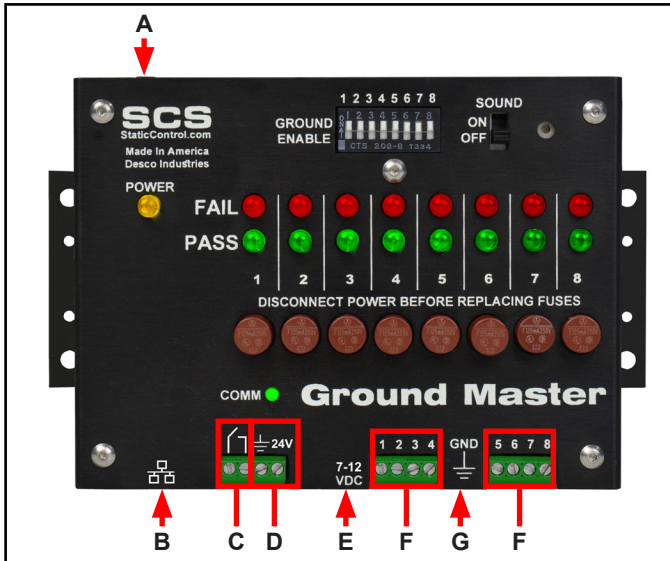
**C. Optical Relay Terminal (screw terminal connector):** The Ground Master Monitor features one optical relay terminal that can be integrated with electronic tools, lights, buzzers, etc. The relay opens when the monitor enters a ground alarm condition, and it remains closed otherwise.

**D. Power Relay Terminals:** For use **ONLY** with the SCS [770069](#) Power Relay. Use the Power Relay to control power to workbenches, hand tools, and other electronic devices when the Ground Master Monitor passes or fails.

**E. Power Jack:** Connect the included power adapter here.

**F. Monitored Tool Terminals:** Monitors metal tools for proper conductive impedance and electromagnetic interference (EMI) voltage. Use 18 AWG wire to connect the metal tools to these terminals.

**F. Ground Terminal:** Common ground point for the monitor.



770044 Ground Master Monitor

### SCS # 770044

**A. Modbus 3.5 mm Stereo Jack:** Outputs Modbus communication protocol which may be used as an alternative to the Ethernet port.

**B. Ethernet Jack:** Provides network communication between the Ground Master Monitor and [Static Management Program \(SMP\)](#).

**C. Optical Relay Terminal (screw terminal connector):** The Ground Master Monitor features one optical relay terminal that can be integrated with electronic tools, lights, buzzers, etc. The relay opens when the monitor enters a ground alarm condition, and it remains closed otherwise.

**D. Power Input Terminals:** Accepts 12-24VDC input from an external source for powering the Ground Master Monitor.

**E. Power Jack:** Connect the included power adapter here.

**F. Monitored Tool Terminals:** Monitors metal tools for proper conductive impedance and electromagnetic interference (EMI) voltage. Use 18 AWG wire to connect the metal tools to these terminals.

**F. Ground Terminal:** Common ground point for the monitor.



SCS  
 926 JR Industrial Drive, Sanford, NC 27332  
 WEBSITE: [StaticControl.com](http://StaticControl.com)  
 PHONE: EAST: (919) 718-0000 | WEST: (909) 627-9634

DRAWING  
 NUMBER  
 770044  
 770079

DATE  
 September  
 2021