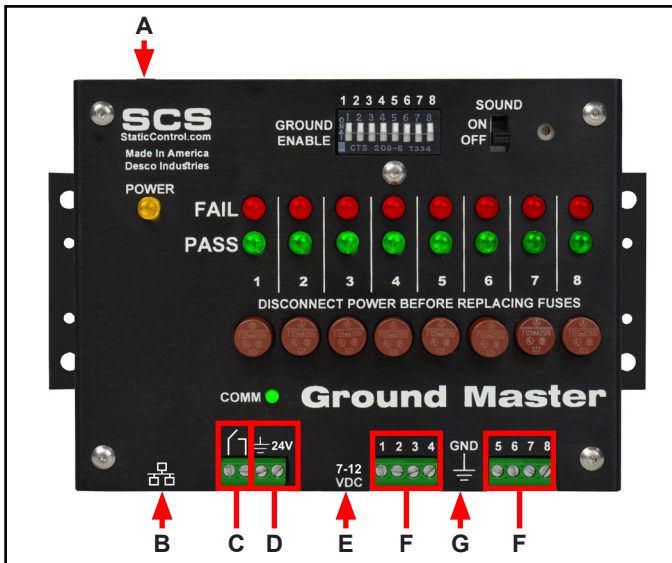


CTC065-RT Ground Master Monitor

SCS # CTC065-RT

- A. Power Input Terminals:** Accepts 12-24VDC input from an external source for powering the Ground Master Monitor.
- B. Optical Relay Terminals and +5V Output:** The Ground Master Monitor features one optical relay terminal that can be integrated with electronic tools, lights, buzzers, etc. The relay opens when the monitor enters a ground alarm condition, and it remains closed otherwise.

Terminals 1 & 2 = Always Closed
Terminals 2 & 3 = Normally Open
Terminal 4 = Logic Output
- C. Power Jack:** Connect the included power adapter here.
- D. Monitored Tool Terminals:** Monitors metal tools for proper conductive impedance and electromagnetic interference (EMI) voltage. Use 18 AWG wire to connect the metal tools to these terminals.
- E. Ground Terminal:** Common ground point for the monitor.



770044 Ground Master Monitor

SCS # 770044

- A. Modbus 3.5 mm Stereo Jack:** Outputs Modbus communication protocol which may be used as an alternative to the Ethernet port.
- B. Ethernet Jack:** Provides network communication between the Ground Master Monitor and [Static Management Program \(SMP\)](#).
- C. Optical Relay Terminal (screw terminal connector):** The Ground Master Monitor features one optical relay terminal that can be integrated with electronic tools, lights, buzzers, etc. The relay opens when the monitor enters a ground alarm condition, and it remains closed otherwise.
- D. Power Input Terminals:** Accepts 12-24VDC input from an external source for powering the Ground Master Monitor.
- E. Power Jack:** Connect the included power adapter here.
- F. Monitored Tool Terminals:** Monitors metal tools for proper conductive impedance and electromagnetic interference (EMI) voltage. Use 18 AWG wire to connect the metal tools to these terminals.
- G. Ground Terminal:** Common ground point for the monitor.



SCS
 926 JR Industrial Drive, Sanford, NC 27332
 WEBSITE: StaticControl.com
 PHONE: EAST: (919) 718-0000 | WEST: (909) 627-9634

DRAWING NUMBER
 770044
 CTC065-RT

DATE
 September
 2021