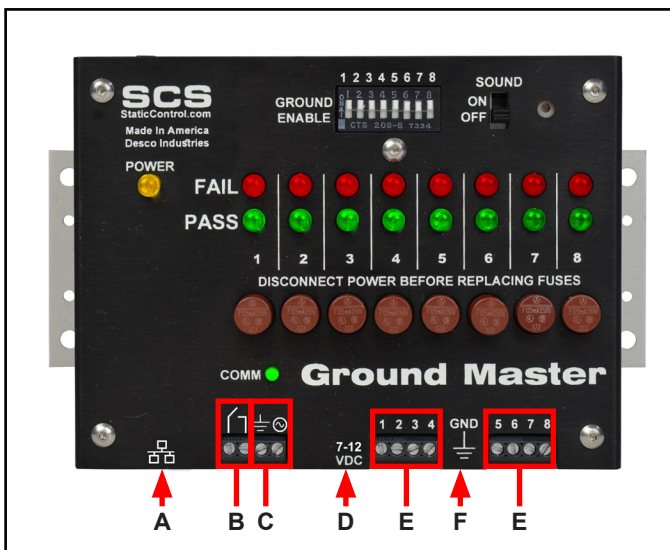


770060 Ground Master Monitor

### SCS # 770060

- A. Ethernet Jack:** Provides network communication between the Ground Master Monitor and [Static Management Program \(SMP\)](#).
- B. Optical Relay Terminal (RJ45 connector):** The Ground Master Monitor features one optical relay terminal that can be integrated with electronic tools, lights, buzzers, etc. The relay opens when the monitor enters a ground alarm condition, and it remains closed otherwise.
- C. Power Jack:** Connect the included power adapter here.
- D. Monitored Tool Terminals:** Monitors metal tools for proper conductive impedance and electromagnetic interference (EMI) voltage. Use 18 AWG wire to connect the metal tools to these terminals.
- F. Ground Terminal:** Common ground point for the monitor.



770079 Ground Master Monitor

### SCS # 770079

- A. Ethernet Jack:** Provides network communication between the Ground Master Monitor and [Static Management Program \(SMP\)](#).
- B. Optical Relay Terminal (screw terminal connector):** The Ground Master Monitor features one optical relay terminal that can be integrated with electronic tools, lights, buzzers, etc. The relay opens when the monitor enters a ground alarm condition, and it remains closed otherwise.
- C. Power Relay Terminals:** For use ONLY with the SCS [770069](#) Power Relay. Use the Power Relay to control power to workbenches, hand tools, and other electronic devices when the Ground Master Monitor passes or fails.
- D. Power Jack:** Connect the included power adapter here.
- E. Monitored Tool Terminals:** Monitors metal tools for proper conductive impedance and electromagnetic interference (EMI) voltage. Use 18 AWG wire to connect the metal tools to these terminals.
- F. Ground Terminal:** Common ground point for the monitor.



SCS  
 926 JR Industrial Drive, Sanford, NC 27332  
 WEBSITE: [StaticControl.com](http://StaticControl.com)  
 PHONE: EAST: (919) 718-0000 | WEST: (909) 627-9634

**DRAWING NUMBER**  
 770079  
 770060

**DATE**  
 November  
 2020